

Denville Crescent, Bordesley Green



Offers Over £195,000

Welcome to this charming family home located on Denville Crescent in the heart of Bordesley Green, Birmingham. This delightful end terrace house boasts a cosy reception room, perfect for relaxing with loved ones. With three bedrooms, there's ample space for the whole family to enjoy.

The property features a well-maintained bathroom, ensuring convenience for all residents. Spanning across 789 sq ft, this home offers a comfortable living space for everyday living.

One of the highlights of this property is the lovely garden, providing a tranquil outdoor space to unwind or entertain guests. Additionally, the on-road parking adds convenience for those with vehicles.

Don't miss the opportunity to make this house your home sweet home in the vibrant city of Birmingham. Contact us today to arrange a viewing and envision the possibilities that this property holds for you and your family.



Denville Crescent, Bordesley Green

- End Terrace
- Potential To Extnd
- UPVC Double Glazing
- Well Lighted
- 3 Bedrooms
- Ideal Family Home
- Gas Central Heating
- On Road Parking

Lounge

14'1" x 13'1" (4.30 x 4.00)

Double glazed bay window to front, wood flooring, ceiling light, mounted wall radiator

Kitchen

9'10" x 9'2" (3.00 x 2.80)

Double glazed window and patio door to rear, drainer sink with mixer tap, storage cupboard, worktop, ceiling light

Bathroom

6'2" x 5'10" (1.90 x 1.80)

Privacy double glazed window to rear bath with thermostatic shower, toilet, pedestal sink with taps, ceiling light

Bedroom 1

12'5" x 8'6" (3.80 x 2.60)

Double glazed window to rear, carpet, ceiling light, radiator

Bedroom 2

9'2" x 7'2" (2.80 x 2.20)

Double glazed window to rear, carpet, ceiling light, radiator

Bedroom 3

16'4" x 9'10" (5.00 x 3.00)

Double glazed window to front, wood flooring, ceiling light, radiator

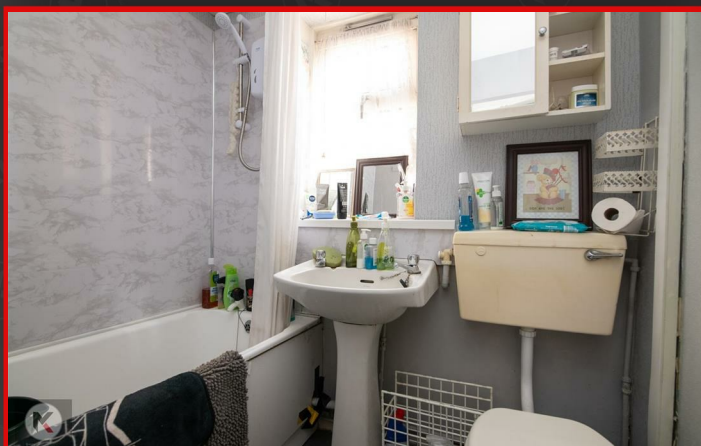
Garden

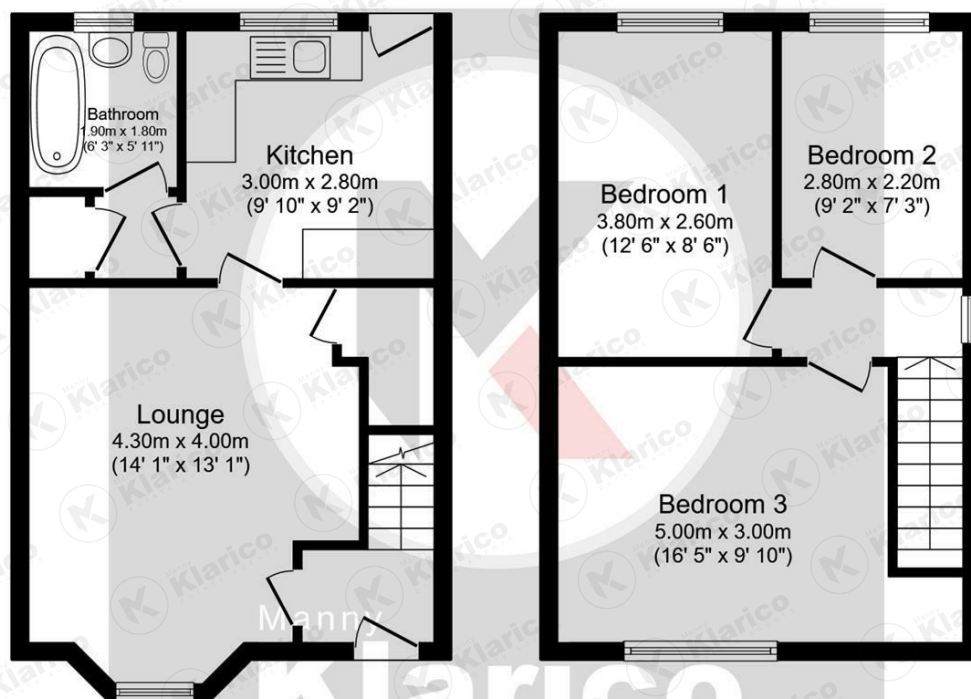
Patio, laid lawn, fence panels to boundaries

Directions



Denville Crescent, Bordesley Green





Ground Floor

Floor area 37.0 m² (399 sq.ft.)

First Floor

Floor area 36.3 m² (390 sq.ft.)

TOTAL: 73.3 m² (789 sq.ft.)

This floor plan is for illustrative purposes only. It is not drawn to scale. Any measurements, floor areas (including any total floor area), openings and orientations are approximate. No details are guaranteed, they cannot be relied upon for any purpose and do not form any part of any agreement. No liability is taken for any error, omission or misstatement. A party must rely upon its own inspection(s).



Manny
Klarico
ESTATE AGENTS

176 Highfield Road
Hall Green
Birmingham
West Midlands
B28 0HT

0121 777 7211

www.mannyklarico.co.uk

